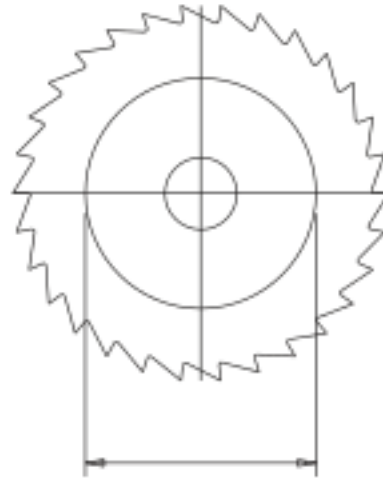
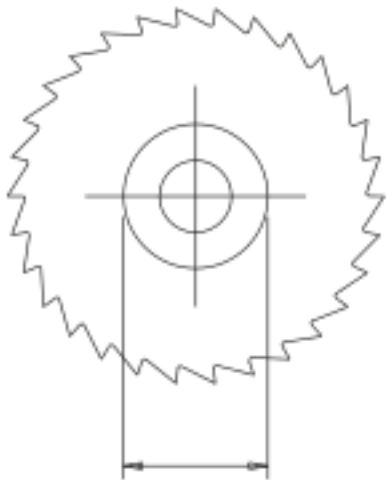


Illustration of Standard vs. Non Standard Hubs or Bosses



STANDARD BOSS

NON STANDARD BOSS

When ordering your special saws, please be ready to provide the following information:

- Saw Diameter
- Saw Width
- Saw Bore
- Keyway Requirements
- Saw hub, or boss, with both it's width and diameter
- Toothform requirements, including rake angle (undercut)
- Special toothform features, such as chamfers / radii / steps
- Material the saw is made from
- Material the saw is intended to cut

For more information or assistance, please do not hesitate to contact us or call 800-621-4274. We look forward to working with you and your team.